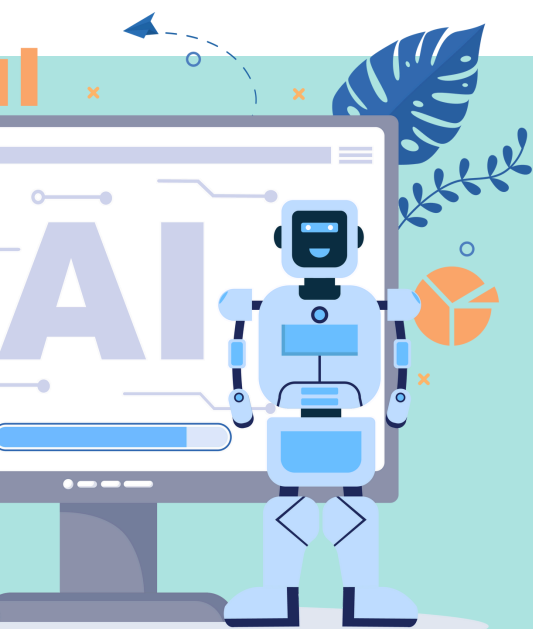


AI LITERACY AND MANIPULATED CONTENT

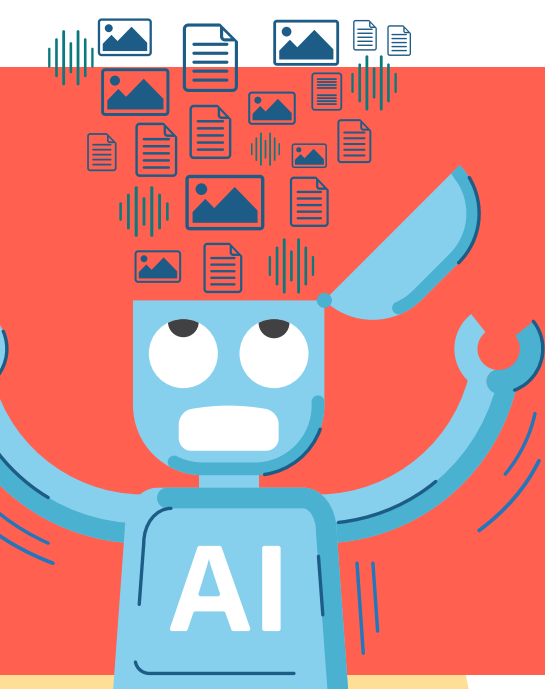
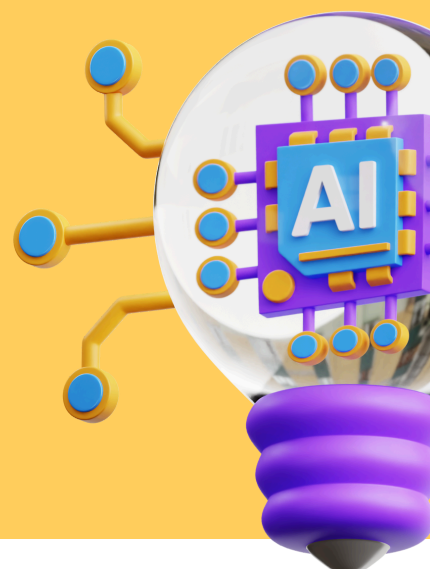


What is Artificial Intelligence (AI)?

AI models are a subset of computer programmes with added capabilities for learning and adaptation. Traditional computer programmes follow rigid logic without learning. AI models are developed for machines to learn on their own.

Common types of AI models

- Machine learning: linear models performing simple tasks, like recognising spam in emails.
- Deep learning: complex models used to, e.g., language translation and self-driving cars.
- Generative models: create new content, similar to data learned, like texts and videos.

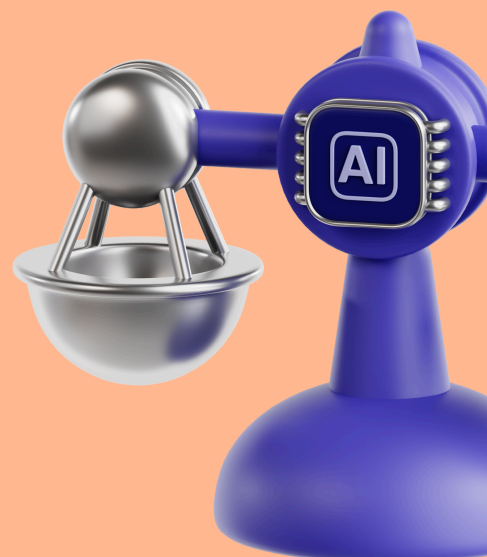


Recognising manipulated content

AI models can “hallucinate” – that means they may generate information that is not based on facts. AI can also create fake videos to impersonate celebrities or your friends asking you for money. So, be critical!

Using AI ethically and responsibly

- Clearly disclose when content is created or assisted by AI.
- Double-check AI-generated information.
- Respect copyright material.
- Avoid generating content that could mislead, spread hate or incite violence.



For more training resources visit
digi-aware-elearninghub.com